

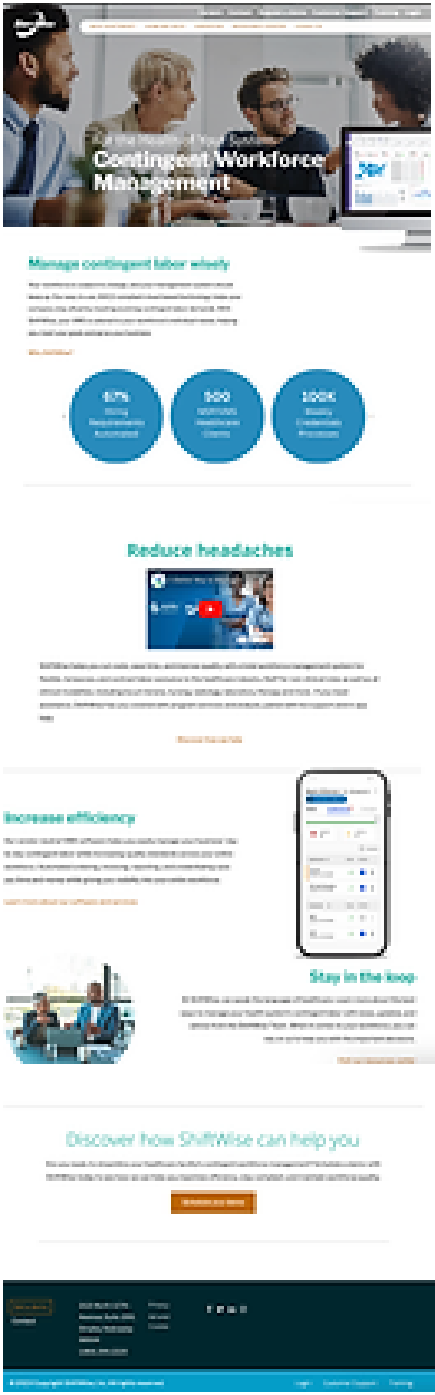
ShiftWise Website Optimization

<https://www.shiftwise.com/>

BEFORE:



AFTER:



Thought Process / Notes



- * The first picture background needs to be updated with photo #1 Getty Image 1184334685
- * Header size needs to be reduced
- * Covid 19 Tab needs to be removed.
- * Replace computer with picture #2 from "VMS-AMN-Passport-Technology-Enhancements Web Version"
- * Replace computer display with picture #3 from ShiftWise Master Prototype - Landing Page

Manage contingent labor wisely

Your workforce is subject to change, and your management system should keep up. VMS technology helps your company stay afloat by meeting evolving contingent labor demands. With ShiftWise, your VMS is catered to your workforce's individual needs, helping you meet your goals and grow your business.

Why ShiftWise?



Reduce headaches

ShiftWise helps you cut costs, save time, and improve quality with a total workforce management system for flexible, temporary, and contract labor exclusive to the healthcare industry. Start for non-clinical roles as well as all clinical modalities, including locum tenens, nursing, radiology, laboratory, therapy and more. If you need assistance, ShiftWise has you covered with program services and analysis, paired with live support and in-app help.

[Discover how we help](#)

Increase efficiency

Our vendor-neutral VMS software helps you easily manage your business' day-to-day contingent labor while increasing quality standards across your entire workforce. Automated ordering, invoicing, reporting, and credentialing save you time and money while giving you visibility into your entire workforce.

[Learn more about our software and services](#)



- * Replace phone picture with #4 from VMS-Enhancements-One-Pager_R3
- * Replace phone display with picture #5 from AMN Digital Ecosystem – FINAL DRAFT - w. Appendix
- * Incorporate that we offer standing up and internal agency and float pool management in the increase efficiency

"From scheduling staff, to maintaining Joint Commission compliance, to finance reporting, ShiftWise has simplified our entire process."

Lynn Campbell
VP OF NURSING, ADVENTIST HEALTH



Stay in the loop

At ShiftWise, we speak the language of healthcare. Learn more about the best ways to manage your health system's contingent labor with news, updates, and advice from the ShiftWise Team. When it comes to your workforce, you can rely on us to help you with the important decisions.

[Visit our resources center](#)

- * Replace circle photo with #6 from Getty Images #1419539600

Discover how ShiftWise can help you

Are you ready to streamline your healthcare facility's contingent workforce management? Schedule a demo with ShiftWise today to see how we can help you maximize efficiency, stay compliant, and maintain workforce quality.

[Schedule your demo](#)



Change the address to current AMN Dallas Office. 2999 Olympus Blvd, Coppell, Texas 75109, United States

Updated Pictures

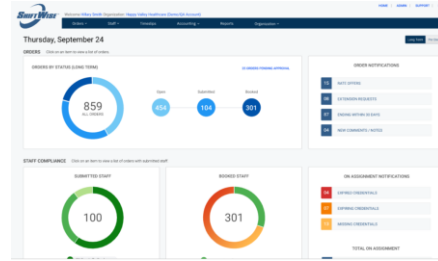
#1



#2



#3



#4



#5

Registered Nurse - Labor & D...
Exclusive
Posted 2 Hours ago
ID: 012345-67
\$7,877 - \$8,715 per week*
Registered Nurse - Labor & Delivery
2295 South Vineyard Avenue, Ontario, CA 91761
Apr 08, 2022 - Mar 05, 2022 48 Hrs/wk
Credentialed Status
8 weeks Travel
Nights 12 N
Job Details
1:2 Patient Ratio 224 Beds
Requirements
• 2 years of experience
• Graduate from an accredited school
• CA State License required/registration
• Where applicable
• BLS, ACLS, NIHSS
Questions? Apply Now

#6





* Update Photo with something else

Our Focus on Continuous Improvement

We are committed to your success. We are continually working on enhancements and new functionality to make our technology better, and easier to use – so you can be more productive. Our Latest Improvements: Now, you can review and approve staff/check bill rates on mobile and tablet and as well as leverage Advanced Analytics with Power BI.

We know it's not easy

Without a reliable VMS, it's hard to guarantee that your healthcare facility has the quality contingent labor it needs to run like clockwork. At ShiftWise, we don't just provide a service, we help you make better decisions with a system built by and for healthcare. Our adaptable, vendor-neutral VMS ensures competitive rates with no hidden markups. Used directly or with an MSP, our VMS handles hundreds of different labor specializations, and multiple cost centers in decentralized or centralized environments. With ShiftWise, cutting costs, improving quality, and maintaining compliance is easy.



* Replace Photo of Person working



Ease the pain points

A VMS maximizes your entire staff's potential by combating non-compliance, staff shortages, cost increases, and overall inefficiency. But don't just use any VMS, use one that speaks the language of healthcare. ShiftWise is the smart choice when it comes to building a qualified, organized, and dedicated contingent workforce.

[Visit our Resource Center](#)

“The amount of time saved by using ShiftWise has helped my staff to focus on staffing. Time is not wasted hovering over the fax machine.”
Diana Milan-Finley
DIRECTOR OF BUSINESS OPERATIONS, ST. VINCENT



Why use a VMS?

ShiftWise's VMS helps you meet clinical and non-clinical demands with the staffing tools you need to improve the quality of your workforce not just short-term, but long-term too. Robust credential management ensures compliance, keeps costs down, and improves business practices to keep your facility running smoothly.

[Learn more about our software and services](#)

* Replace photo with something else

* Replace the address to current AMN Dallas Office.
2999mpus Blvd, Coppell, Texas 75109, United States

On the Homepage replace a with b. This text is located under the manage content wisely title.

* "Your workforce is subject to change, and your management system should keep up. VMS technology helps your company stay afloat by meeting evolving contingent labor demands. With ShiftWise, your VMS is catered to your workforce's individual needs, helping you meet your goals and grow your business."

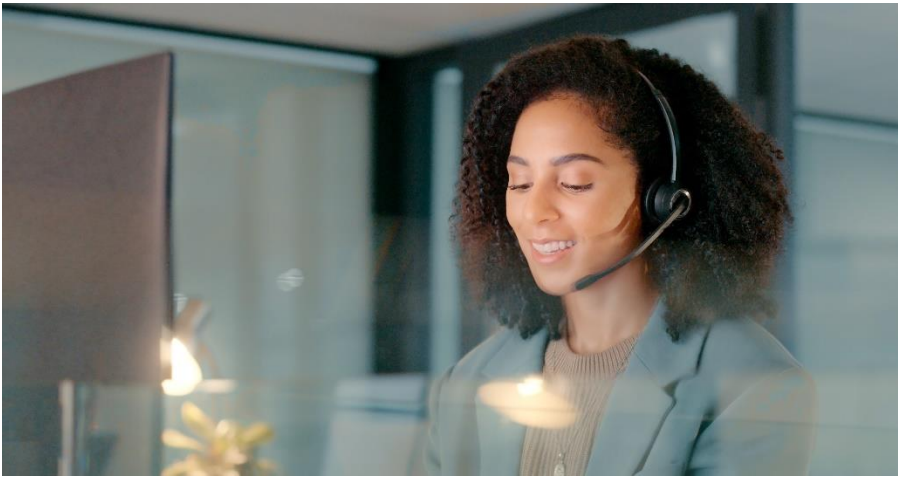
* "Your workforce is subject to change, and your management system should keep up. Our easy to use, SOC2 compliant cloud-based technology helps your company stay afloat by meeting evolving contingent labor demands. With ShiftWise, your VMS is catered to your workforce's individual needs, helping you meet your goals and grow your business."

Replace the address on all pages at the bottom of the page to current address.

AMN Dallas Office. 2999 Olympus Blvd, Coppell, Texas 75109, United States



Replace the address to current AMN Dallas Office. 2999 Olympus Blvd, Coppell, Texas 75109, United States



Our services page



- **CoreTech or TechCore**
- TechAxis
- OmniTech
- TechCentrum
- Nexus
- Evolve

| | CoreTech | TechCore | TechAxis | OmniTech | TechCentrum | Nexus | Evolve |
|---|--------------|---------------|-----------------|------------------|------------------|---------------|------------------|
| Trademarked? | Yes | No | No | No | No | Yes | Yes |
| Is it used somewhere else? | Yes | Yes | Yes | Yes | Yes | Yes | Yes |
| Does it have multiple trademarks? | Yes | | No | No | No | Yes | Yes |
| Small (<1k employees) or large business | Large | Small | Small | Small | Small | Small | Small |
| Industry | Technology | Technology | Hiring Firm | Technology | Technology | Manufacturing | Vacation Rentals |
| Website | Coretech.com | Techcore1.com | Techaxisinc.com | Omnitech-inc.com | Tech-centrum.com | Nexus.com | Evolve.com |

Website used tmsearch.uspto.gov

